

MCD
Racing

4X4
MONSTER

SPARE PARTS LOCATOR





THANK YOU

Thank you for selecting MCD RRV4. This car is designed to ensure you the best driving experience possible. With its highly engineered and durable composite parts you will have a dedicated constancy and rapid responses to your commands. Please enjoy driving your rock solid MCD.



CAUTION

Please take attention on the instructions. Otherwise you can damage your kit and cause serious injury or death.



CAUTION

Please use extreme caution when operating fuel powered R/C cars. These models use highly poisonous and flammable fuels. The cars can exceed speeds of 50 m.p.h. and cause serious self injury and damage to property.

Safety Guides When Operating Gasoline Engines

- For operating the engine a mixture of gasoline and two cycle oil are required. Please use extreme caution with gasoline.
- Running the car near open flames can cause your car to catch fire. Do not smoke while refueling your model.
- Always store fuel in a well ventilated place, Keep away from heating devices, open flames, direct sunlight, or batteries while storing.
- Gasoline is flammable and poisonous. Gasoline powered model engines emit poisonous vapours. These vapours can irritate eyes and can be highly dangerous to your health.
- For the engine you can mount on our car you must only use a mixture of gasoline and two cycle oil as fuel .
- Operation overheats some parts such as the exhaust and the engine. Do not touch them until they have cooled.
- Before storing the car please empty the fuel tank .
- Keep fuel away from children.
- Store in a well ventilated area.



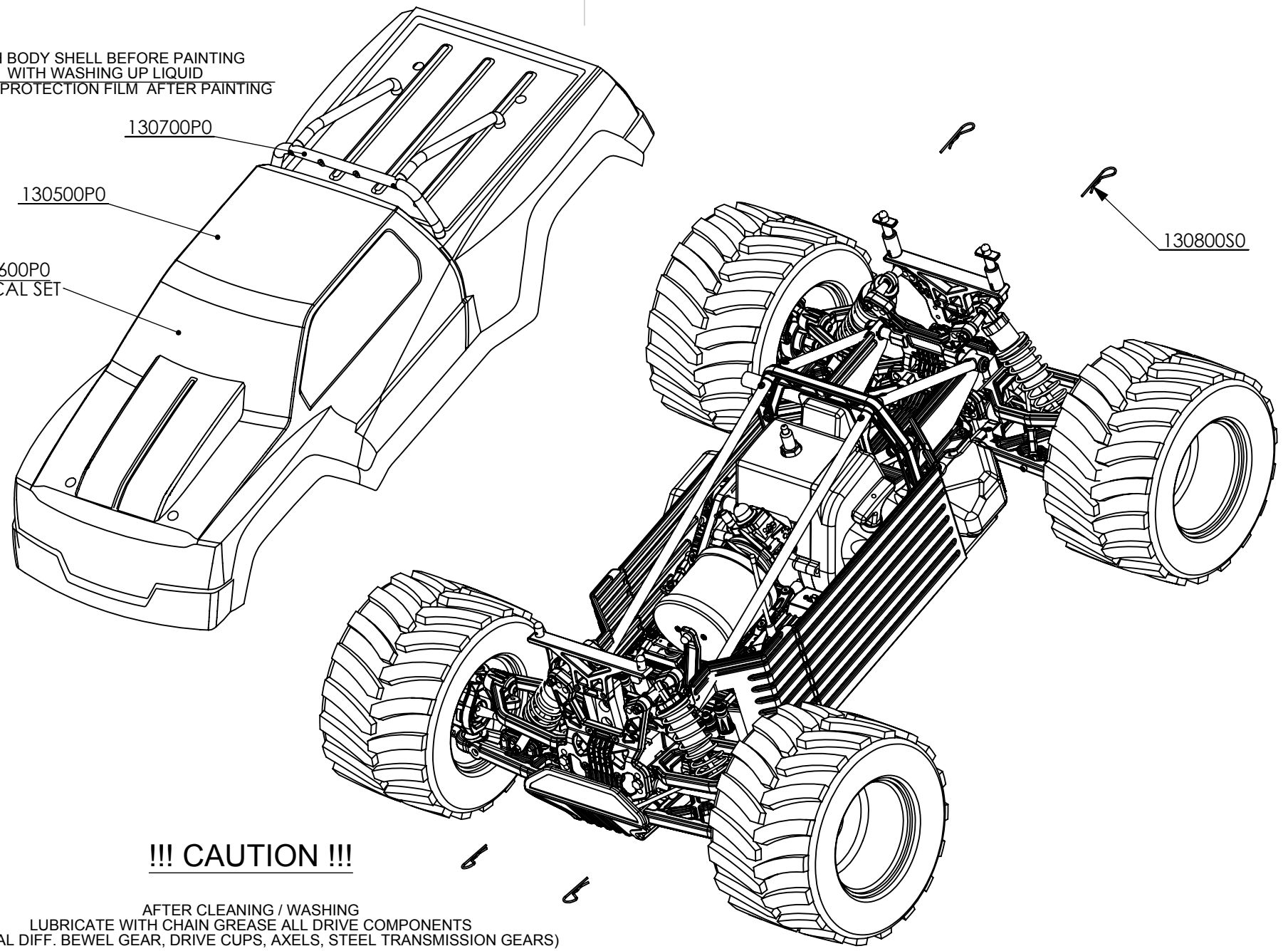
ATTENTION

Apply lock nut cement to all metric screws.

WASH BODY SHELL BEFORE PAINTING
WITH WASHING UP LIQUID
REMOVE PROTECTION FILM AFTER PAINTING

130700P0
130500P0
130600P0
DECAL SET

130800S0



!!! CAUTION !!!

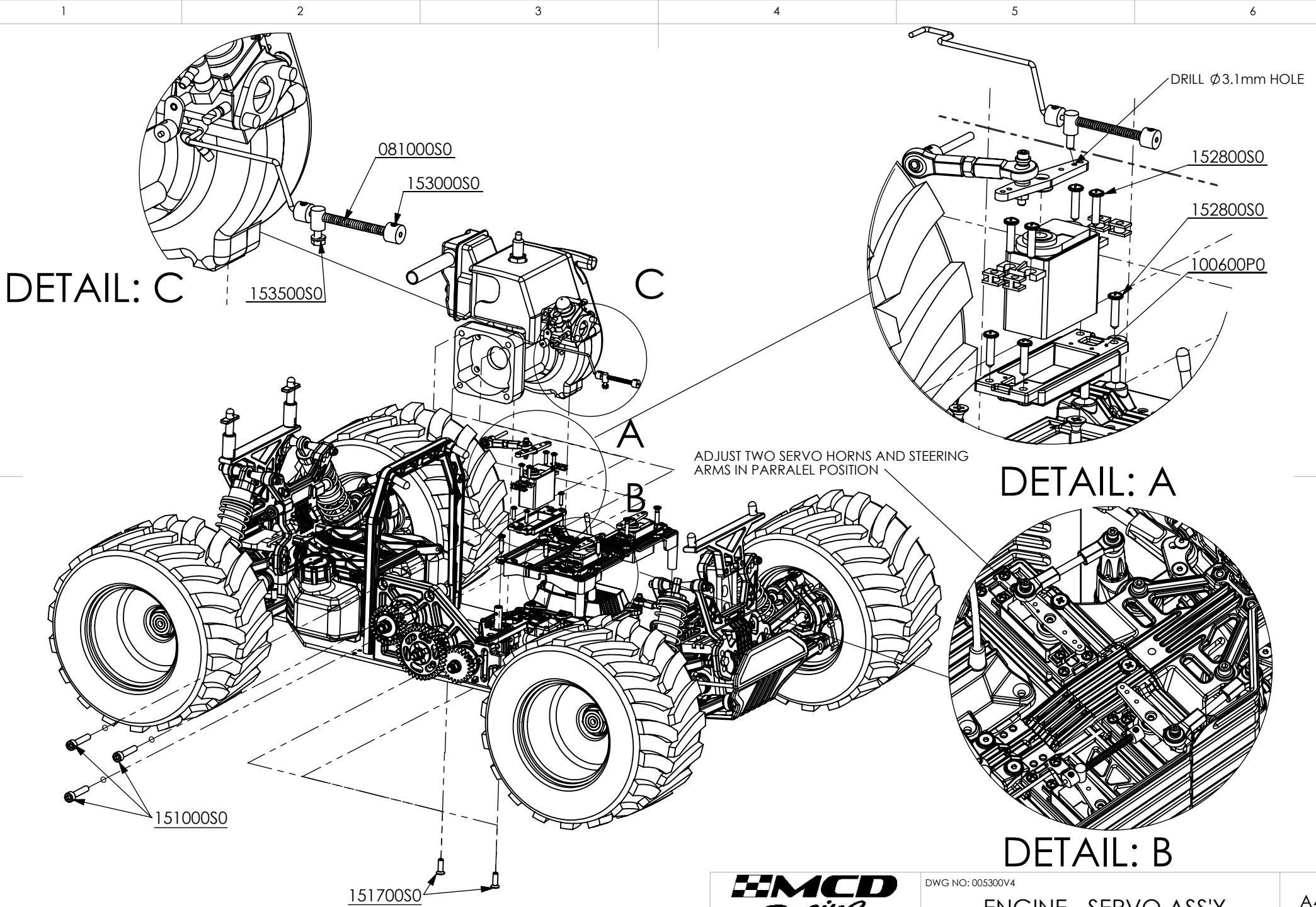
AFTER CLEANING / WASHING
LUBRICATE WITH CHAIN GREASE ALL DRIVE COMPONENTS
(CENTRAL DIFF. BEWEL GEAR, DRIVE CUPS, AXELS, STEEL TRANSMISSION GEARS)



DWG NO: 005300V4

GENERAL VIEW

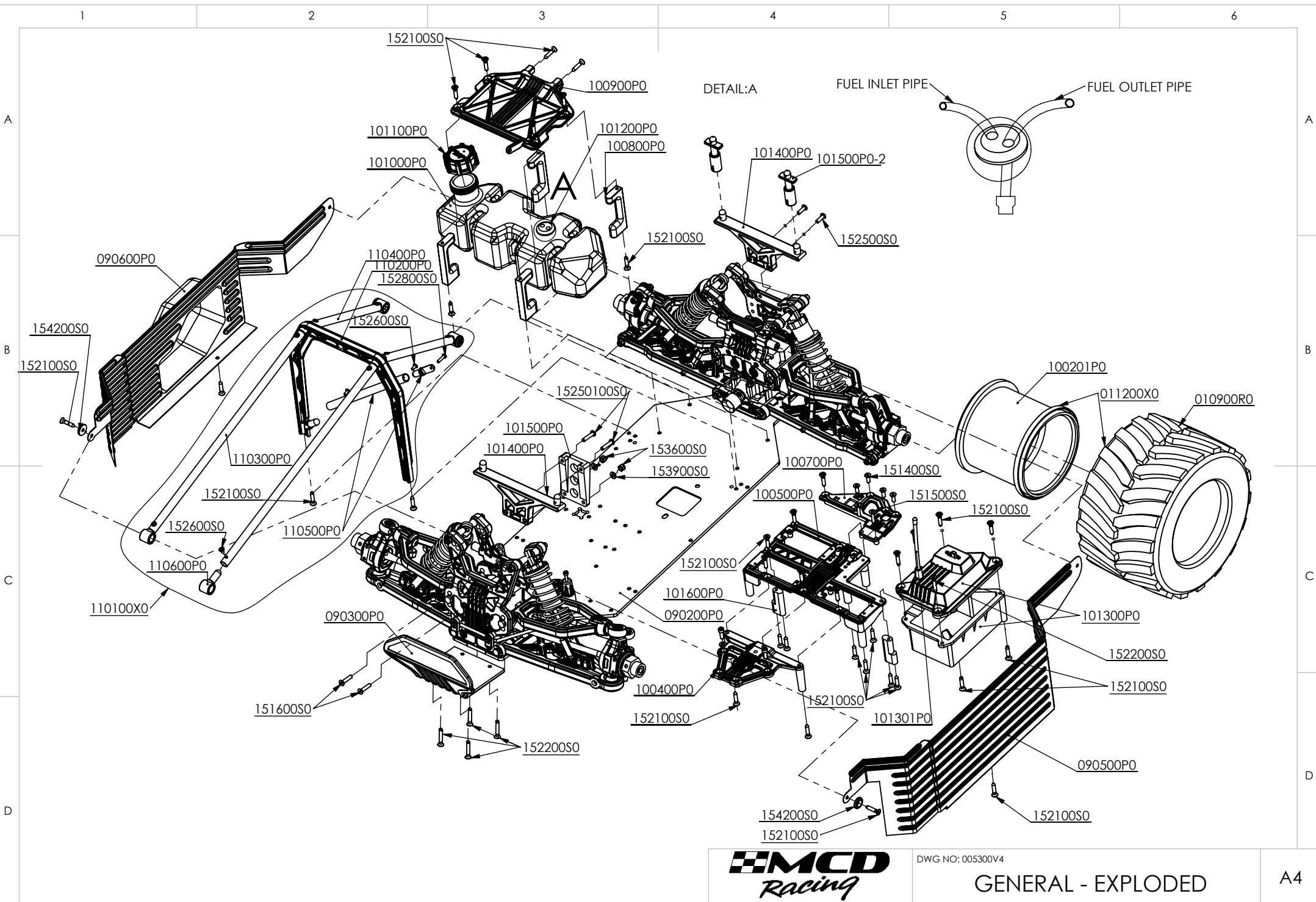
A4



DWG NO: 005300V4

ENGINE - SERVO ASS'Y

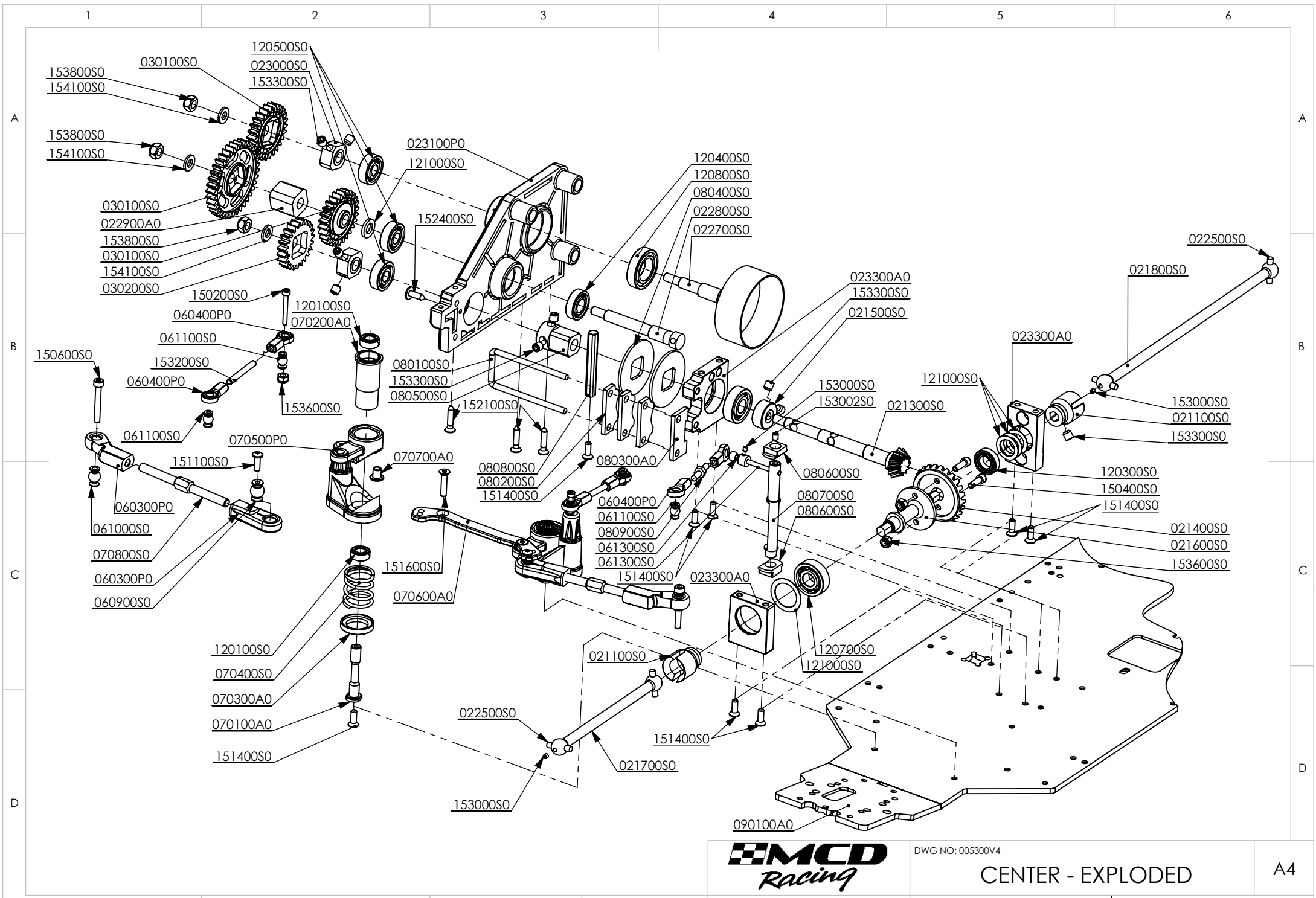
A4



DWG NO: 005300V4

GENERAL - EXPLODED

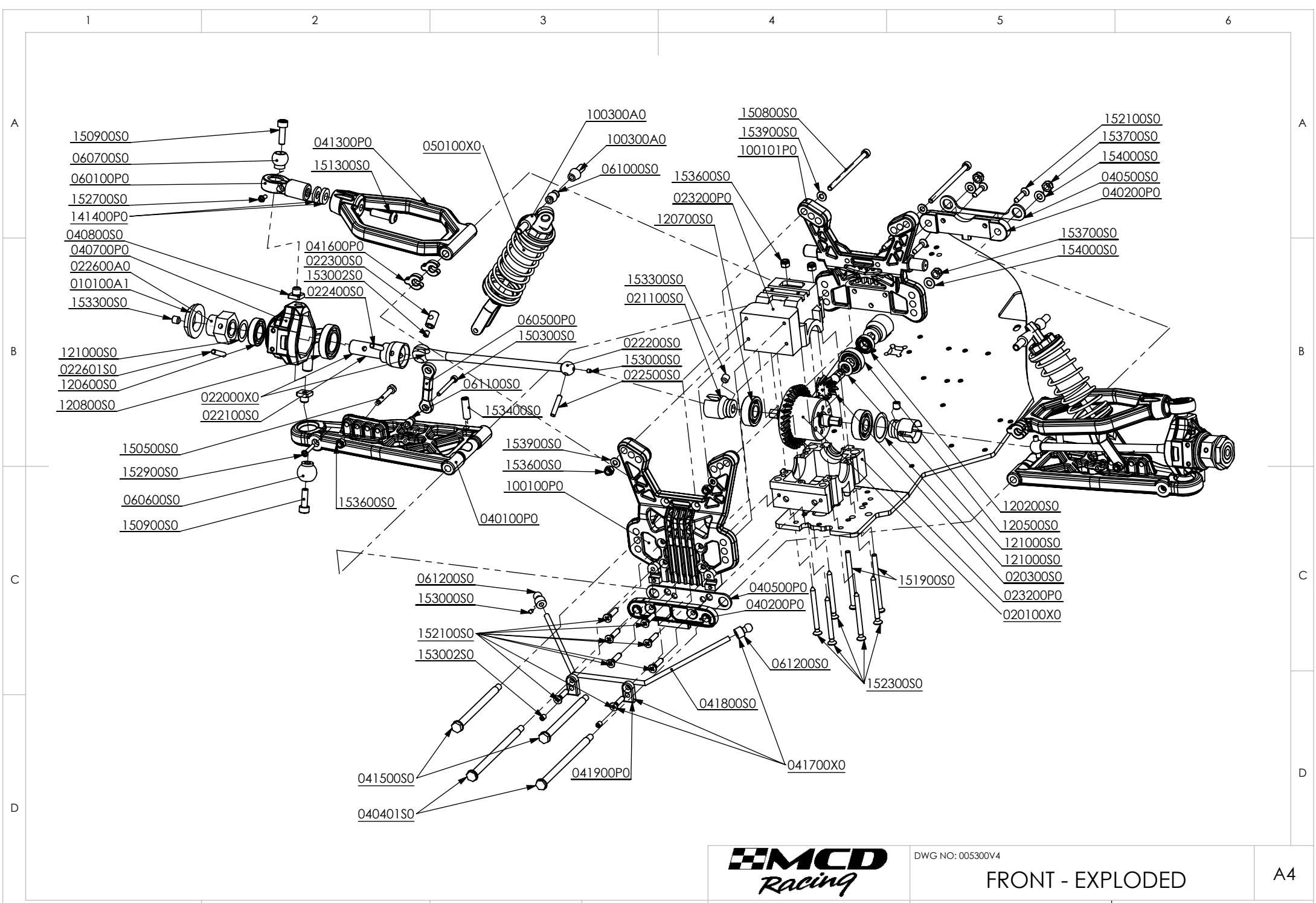
A4



DWG NO: 005300V4

CENTER - EXPLODED

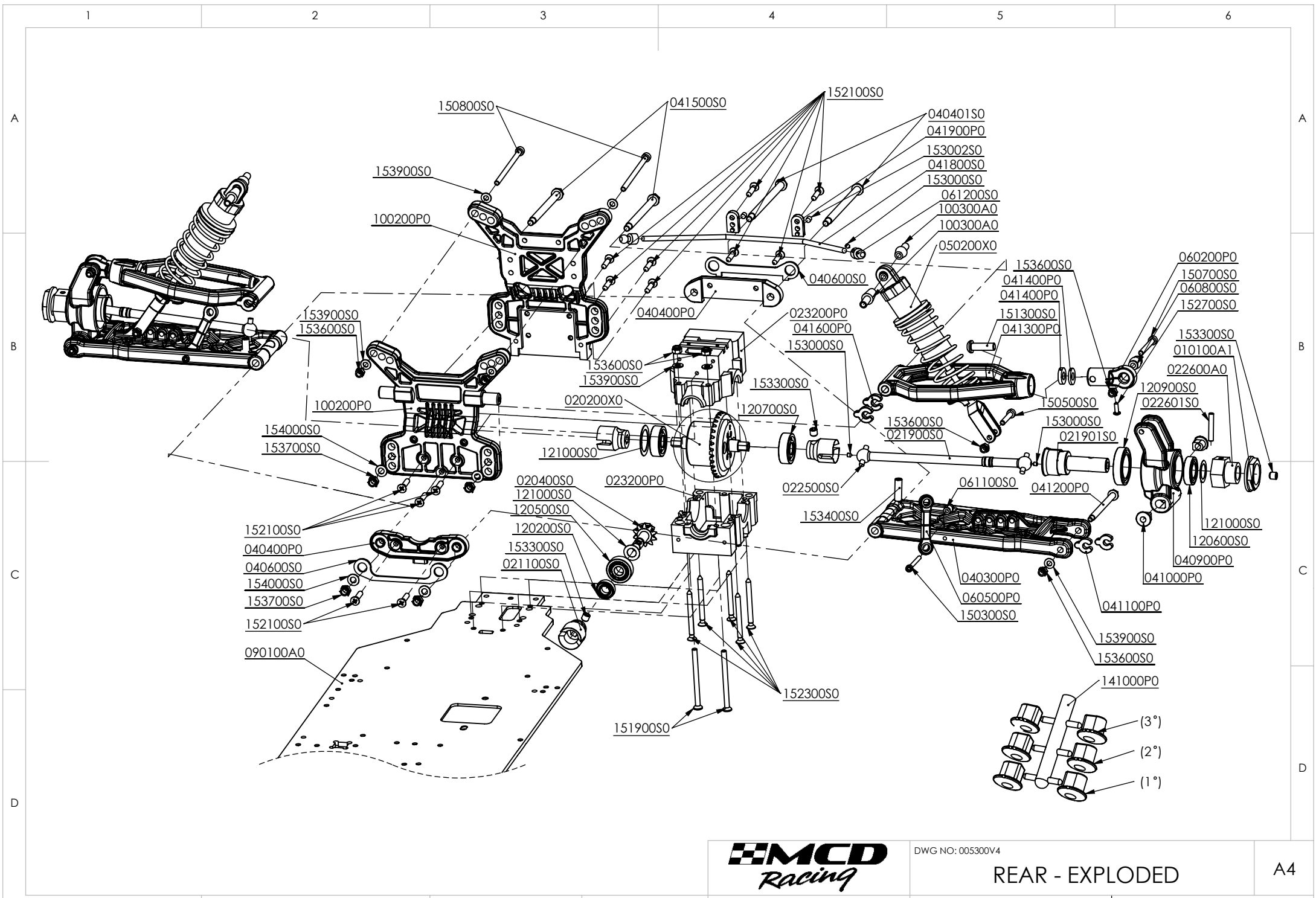
A4



DWG NO: 005300V4

FRONT - EXPLODED

A4



DWG NO: 005300V4

REAR - EXPLODED

A4

Product Code	Product Name	Product Code	Product Name
Wheels & Tyres			
010100A1	Wheel Nut 18MM	023000S0	Gear Box Steel Drive Block (A-D Gears)
010101P0	WHEEL BLACK 15 SPOKE 180MM	023210P0	Engine Carrier Plate (Gear Box)
010200P0	WHEEL BLACK DISH 155MM	023300P0	Diff House Upper / Lower - Front/Rear
010201P0	WHEEL BLACK DISH MONSTER 220MM	023300A0	Central Diff Holder Alloy Set
010300R0	180MM BLOCK STUT TYRE WHITE SPOT	Gears	
010400R0	180MM MICRO STUT TYRE WHITE SPOT	030100S0	Steel Gear Z30 - Z33 (A/B) Standard
010500R0	180MM BLOCK STUT TYRE ULTRA GRIP	030200S0	Steel Gear Z23 - Z26 (C/D) Standard
010600R0	180MM Micro STUT TYRE ULTRA GRIP	030300S0	Steel Gear Z26 - Z37 (A/B)
010700R0	155MM BLOCK STUD TYRE ULTRA GRIP	030400S0	Steel Gear Z28 - Z35 (A/B)
010800R0	155MM Micro STUD TYRE ULTRA GRIP	030500S0	Steel Gear Z31 - Z32 (A/B)
010900R0	MONSTER TYRE 220MM	030600S0	Steel Gear Z24 - Z25 (C/D)
011000X0	180MM BLOCK STUD WHITE SPOT-15 SPOKE WHEEL ASSY	030700S0	Steel Gear Z19 - Z30 (C/D)
011100X0	180MM Micro STUD WHITE SPOT-15 SPOKE WHEEL ASSY	030800P0	Polyamid Gear Z30-33 (A/B) Standard
011200X0	Monster tyre Black Dish wheel Assy 220mm	030900A0	Polyamid-Alloy Gear Z22-27 (C/D) Standard
Transmission System			
020100X0	Front Planet Diff Assy	031000A0	Polyamid-Alloy Gear Z19-30 (C/D) Monster Standard
020200X0	Rear Planet Diff Assy	031100P0	Polyamid Gear Z27-36 (A/B)
020300S0	Front Diff Bevel gear Z10	031200P0	Polyamid Gear Z24-39 (A/B)
020400S0	Rear Diff Bevel gear Z10	Suspension System	
020500S0	Front Diff Crown Wheel Gear Z32	040100P0	Front Lower Wishbone Left/Right Set
020600S0	Rear Diff Crown Wheel Gear Z32	040200P0	Front Wishbone Bracket Inner/Outer Set
020700S0	Front/Rear Steel Diff Case	040300P0	Rear Lower Wishbone Left/Right Set
020800S0	Diff Internal Panetary Pins for Z9	040400P0	Rear Wishbone Bracket Inner/Outer Set
020900S0	Z9 Planetary Gears	040401S0	Lower Wishbones Hinge pins 06x95mm
021000S0	Z10 Diff Output Gears (Hex)	040500S0	Steel Front Wishbone Brace Inner/Outer Set
021100S0	Diff Output Coupling (Hex)	040600S0	Steel Rear Wishbone Brace Inner/Outer Set
021200X0	Central Solid Diff Assy	040700P0	Front Hub Left/Right Set
021300S0	Central Bevel Gear Z11 (Lay Shaft)	040800S0	Front Hub Steel Insert
021400S0	Central Diff Crown Wheel Gear Z25 For Solid Diff	040900P0	Rear Hub Left/Right Set (0 Deg. Toe)
021500S0	Central Diff Bevel Adjustment Spacer	041000P0	Rear Hub Toe Adjustment Inserts 1,2,3 Deg Set L/R
021600S0	Central Diff Solid Bar	041100P0	Rear Hub Y Clips 5MM For Wheelbase Adjustment
021700S0	Central Front Drive Shaft (DogBone)	041200P0	Rear Lower Wishbone-Hub Hinge Pins 05x70mm
021800S0	Central Rear Drive Shaft (DogBone)	041300P0	Upper Wishbone Front/Rear
021900S0	Rear Drive Shaft (Dog Bone) Chrome Competition	041400P0	Camber Adjustment Spacer Set
021901S0	Rear Axle	041500S0	Upper Wishbones Hinge pins 06x82mm
022000X0	Front CVD Assy	041600P0	Upper Wishbone Y Clips 6mm For Caster Adjustment
022100S0	Front Axle for CVD	041700X0	AntiRollBar Set 4MM Front/Rear Complete
022200S0	Front Drive Shaft Repair Kit for CVD	041800S0	AntiRollBar Springing 04mm
022300S0	Front CVD Barrel	041900P0	AntiRollBar Tower Holders
022400S0	Front CVD pin 04x22MM	Shock Absorber System	
022500S0	Drive Shaft Pins 04x20MM	050100X0	Front Shock Absorber Assy Big Bore
022600A0	Wheel Drive Block (Hex)	050200X0	Rear Shock Absorber Assy Big Bore
022601S0	Wheel Drive Block Pins 04x24mm	050300S0	Front Medium Big Bore Spring
022700S0	Engine Clutch Bell	050400S0	Rear Medium Big Bore Spring
022800S0	Ger Box Central Transmission Shaft (B-C Gears)	050500S0	Front Shock Shaft 05x79mm
022900A0	Ger Box Drive Block for Central Transmission Shaft (B-C Gears)	050600S0	Rear Shock Shaft 05x89mm
Product Code			
Rosse & Ball Joints			
060100P0	Front Upper Rose Joint Q14mm Left/Right	050700A0	Front Shock Body Big Bore
060200P0	Rear Upper Rose Joint Q10mm	050800A0	Rear Shock Body Big Bore
060300P0	Steering - Rodarms Rose Joint Set Q10&08.5mm	050900A0	Shock Absorber Upper Lid Big Bore
060400P0	Steering / Brake Servo Rose Joint Set Q7mm	051000P0	Shock Absorber Upper Plastic Joint
060500P0	AntiRollBar Rose Joint Q7	051100A0	Shock Absorber Spring Adjustment Wheel Big Bore
060600S0	Front Lower Wishbones BallJoint 05x17mm	051101R0	Shock Absorber Spring Adjustment Wheel O-Ring Big Bore
060700S0	Front Upper BallJoint 05x14mm	051200P0	Shock Spring Table Big Bore
060800S0	Rear Upper BallJoint 04x10mm	051300A0	Shock Absorber Fork Alloy
060900S0	Steering Rod-Arm Inner BallJoint M4x10mm	051400P0	Shock Absorber Piston 3x3 Big Bore
061000S0	Shock Absorber/Steering-Hub BallJoint 04x8.5mm	051500P0	Shock Absorber Inner Lid Big Bore
061100S0	Servo / Lower Antirollbar Ball Joint Q3*7mm	051600P0	Shock Absorber Lower Lid Big Bore
061200S0	AntiRollBar Ball Joint Upper Q7 with Stop Screw	051700R0	Shock Absorber Air Cell Foam Big Bore
061300S0	Brake arm Ball Joint with brake pin	051800R0	Shock Absorber Sealing Ring Set Big Bore
061900S0	Steering Main Post	051900S0	Shock Absorber Rebound Valve 012mm
070200A0	Steering Sprig Holder Body	Product Code	
070300A0	Steering Servo Saver Adj. Wheel	052000S0	Shock Absorber Rebound Valve Q12.2mm
070400S0	Steering Servo Saver Spring	052100S0	Shock Absorber Rebound Valve Q12.5mm
070500P0	Steering V Arm Body Upper/Lower Set.	052200P0	Shock Absorber Repair Kit Big Bore
070600A0	Steering Bracket Alloy	Other, Towers, Holders & Plates	
070700A0	Steering Bracket Trust Washers	100100P0	Front Shock Tower Inner Outer Set
070800S0	Steering Wheel Turnbuckle M6	100200P0	Rear Shock Tower Inner Outer Set
Brake System			
080100S0	Brake U Pad Carrier	100300A0	Tower Shock Mounting Posts Set
080200S0	Brake Pads	100400P0	Steering Upper Deck Plate
080300A0	Brake Pad Fillers 3mm	100500P0	Servo Mount Plate
080400S0	Brake Disk	100600P0	Standard Size Servo Adapters
080500S0	Brake Disk Drive Block	100700P0	Brake Upper Deck Plate
080600S0	Brake Square Eccentric Shaft Carrier	100800P0	Fuel Tank Holders
080700S0	Brake Eccentric Shaft.	100900P0	Fuel Tank Upper Deck Plate
080800S0	Brake Pad Stopper pin (Square)	101000P0	Fuel Tank.
		101100P0	Fuel Tank Lid.
		101200P0	Fuel Tank I/O Holder Rubber + Hose Set
		101300S0	Radio / Battery Box
		101301P0	RX Antenna Stick
		101400P0	Race Runner Body Holder Set
		101500P0	Monster Truck Body Holder Set

